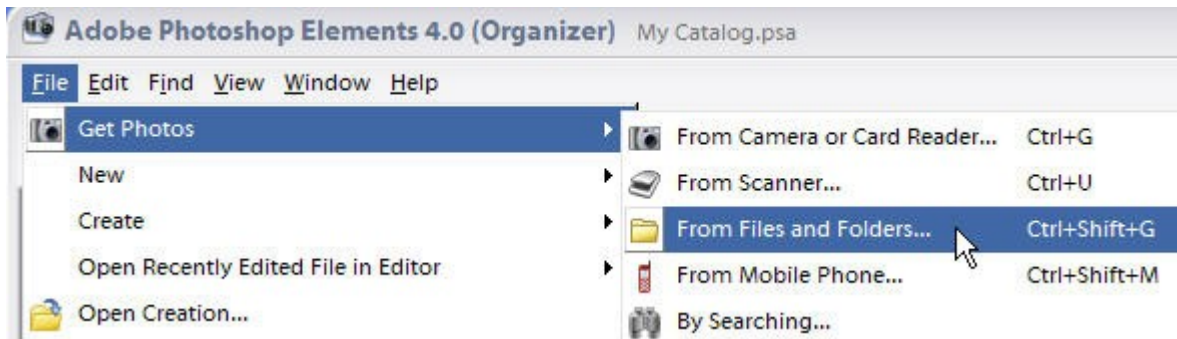


Photoshop Elements SIG - October 11, 2006

by John Durrett

Photoshop Organizer

To get photos inside Photoshop Organizer, select **File > Get Photos > From Files and Folders**. Then use the Browse button to **select your photo folder** (normally My Pictures), and click **OK**.



If you have loaded too many non-pictures into the Organizer because you scanned your entire hard drive, don't worry. It is only a file that shows where your images are located on the drive. To create a new catalog, select **File > Catalog**, and then choose **New**. Give your catalog a name and tell it what folder(s) to search to create your catalog.

Tip #1: For an alternate view of the Organizer that looks more like Windows Explorer, select **View > Arrangement > Folder Location**. This works great if you stored your photos in named folders. To **reset** the Organizer, select **View > Arrangement > Date (Newest First)**.

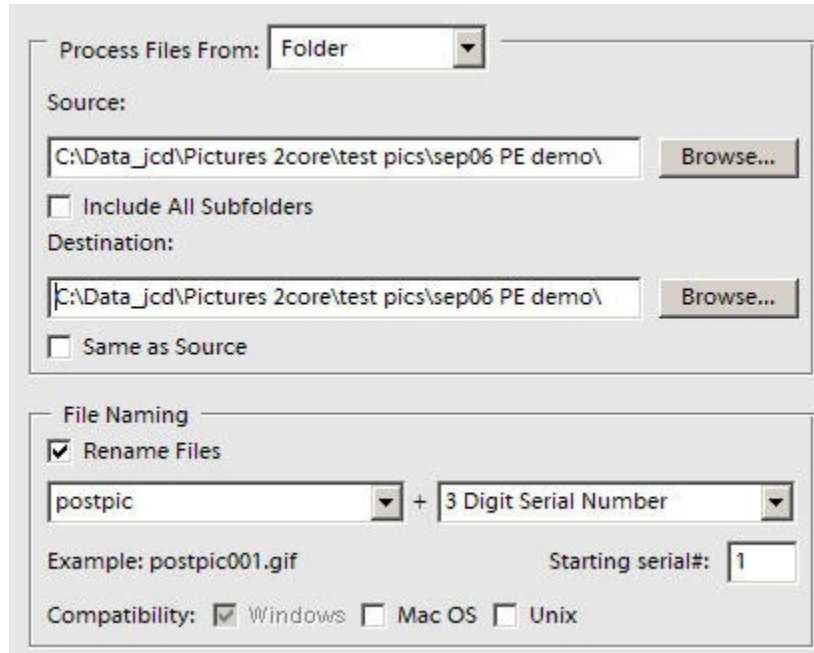
Tip # 2: As an alternative to using the Organizer, you can choose the **File Browser in Photoshop Elements Editor**. Do this by selecting **File > Browse Folders** in the Editor. Question: What happens if you choose the Photo Browser icon in the Editor?

Using the Quick Fix Editor

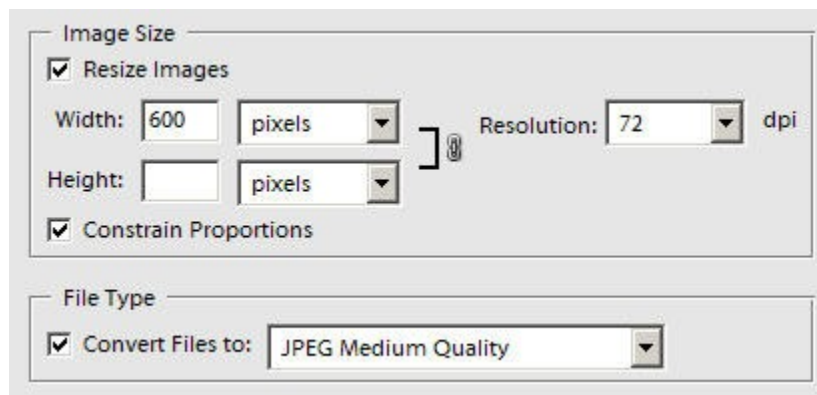
To apply the Quick Fix Editor to photos you see in the Organizer, hold down the **Ctrl** key and **highlight all the thumbnails** of the photos you want to clean up. Then select the icon right above the thumbnails that says **Edit** and select **Go to Quick Fix** from the drop down menu. All your selected photos are now open in Photoshop Elements - Quick Fix Editor. Look for the simplest solution first. Try **Smart Fix** on your photos. If that doesn't give you what you want, then **Undo** it and try **Auto Levels**, **Auto Contrast**, and **Auto Color** in that order. You can even add **Auto Sharpen**. If you don't like any of those adjustments, just **Undo**. And don't forget those little sliders in each section. They let you control the amount of the adjustment. If you make adjustments using the sliders and you want to keep what you set, then click on the **Check Mark**. Otherwise hit the **Reset** or the **No sign**.

Processing Multiple Files

Photoshop Elements can do batch processing of files. Make sure Photoshop Elements is open. Then select **File > Process Multiple Files** from the menu. You will get the following.



First, **set your source folder** and use **any folder you want as the destination folder**. You want the new files renamed. You can choose a new name or accept the default - postpic. Now we set the image sizes and quality of the output files.



Try a width of either **600 or 500 pixels** for photos to friends, and set the **Resolution to 72 dpi**. This is excellent for viewing on a computer or the internet, and will keep down the file size. The height is linked and you should leave it as is to allow the processor to resize the images with the right size ratios. Also, accept a setting on **JPEG Medium Quality**. That gives a nice, clean

picture for your friends. Since you already adjusted these photos, undo any checkmarks on the right side of the screen for the adjustment area. Then click **OK** to finish the process.

[Hint: If you want to do batch processing of a really large number of photos, you can also let the batch processor make the photo adjustments. Just add checkmarks on the right. I would probably use Auto Levels and Auto Contrast and go with those to see what you get. It may be enough.]

Your photos will show up inside your destination folder and inside another folder called processed, which is created by the batch processor. Now you can attach these files to your emails to your friends. All done.....

Additional Questions

There are additional questions that will be addressed during the SIG meeting. Here are some of the questions:

- When do we use the Photoshop Elements Standard Editor?
- What is the desktop in Photoshop Elements?
- What are all the palettes?
- How can we use palettes for a while and then put them back?
- How do we judge an image's size?
- How can I tell if I will get a good print out of a photo?
- What do I do to send a copy of a photo as an email attachment?
- What are the photo formats and why should I care?

Write up by John Durrett

jedurrett@wblsi.net