

# Editing your Startup Folder


Computer Booters of Sun Lakes  
September, 2011



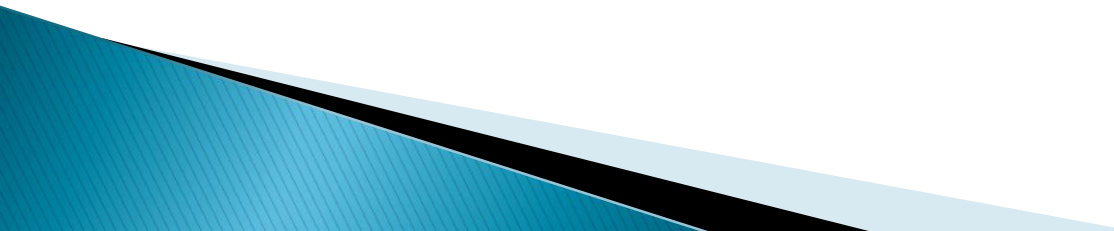
# Does it take a long time for your computer to start?

- ▶ If so, too many programs may be running in the background
  - How did these programs get in my Startup Folder?
  - Is this program an essential process?
  - Is it harmful?
  - Can/should I remove it?
  - Is it CPU (central processing unit) extensive?

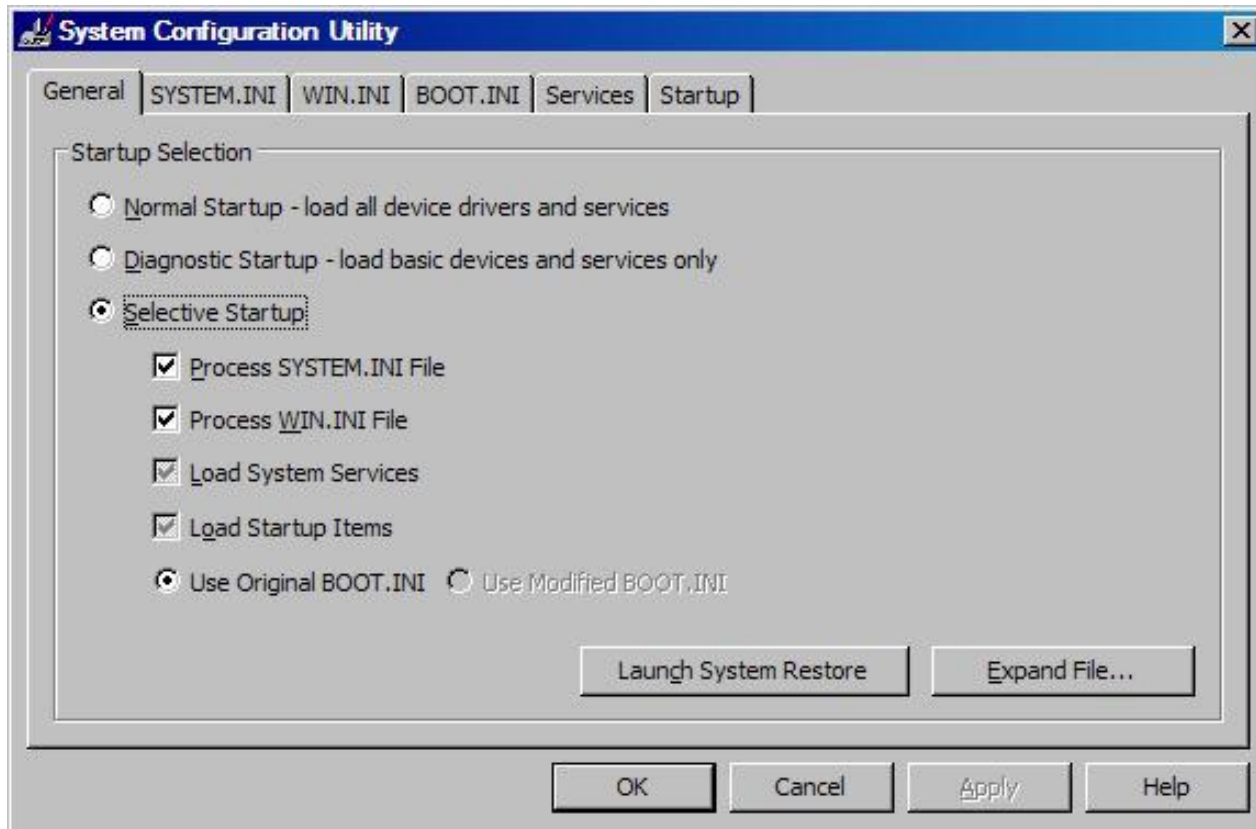
# How did these programs get in my Startup Folder?

- ▶ Non-system processes originate from software you installed on your system
  - ▶ Software companies add their programs to the Startup Folder so that their programs are running in the background. When you click on their icon the program loads faster
  - ▶ AOL, Adobe Acrobat and QuickTime are prime examples
- 

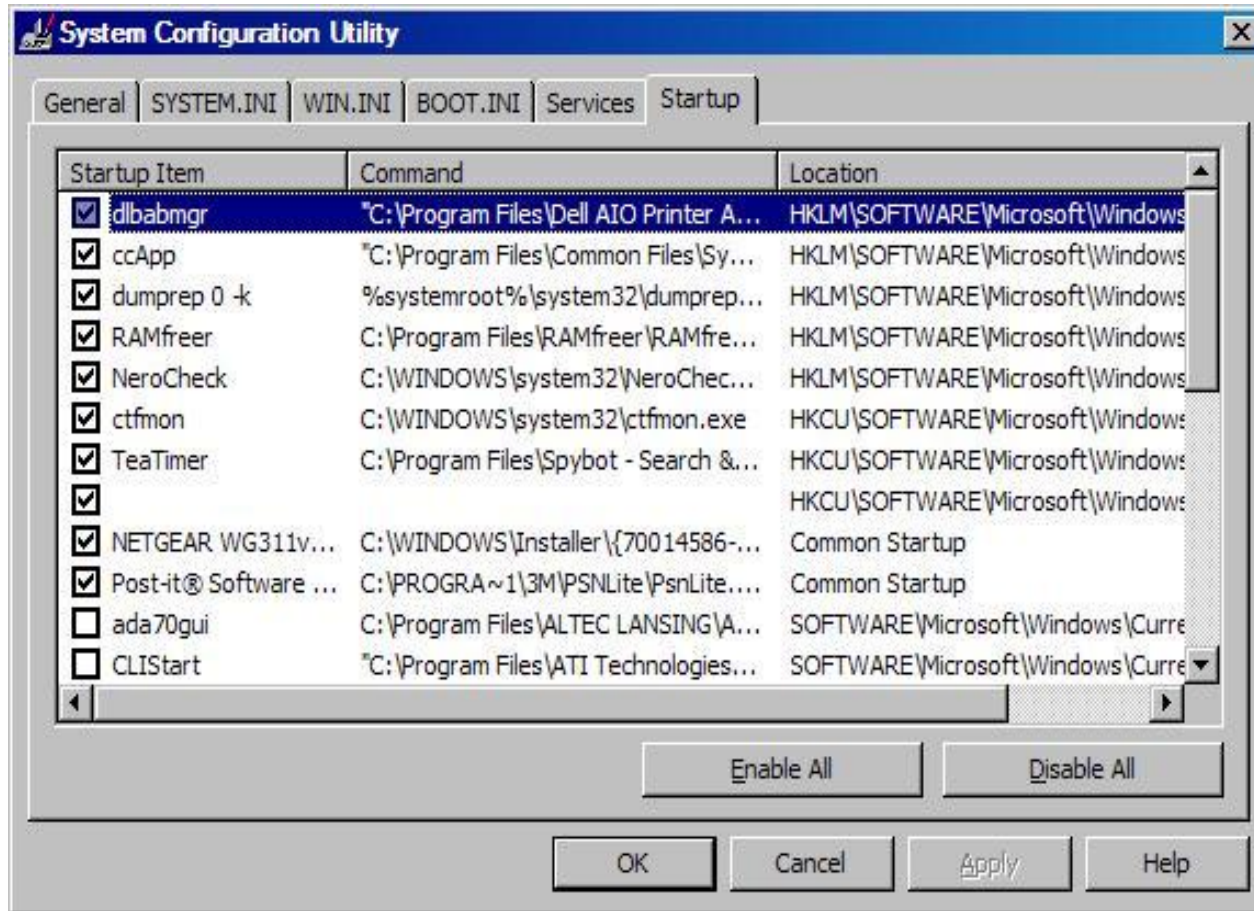
# What's in my Startup folder?

- ▶ In XP, click on the Start button
  - ▶ Click on Run
  - ▶ Type msconfig in the box and press Enter
    - This opens the System Configuration Utility
- 

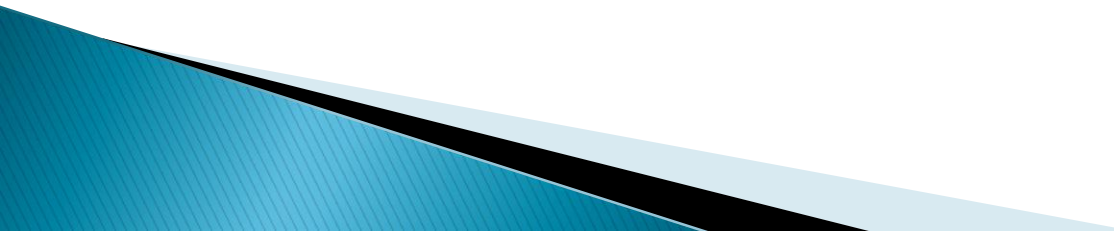
Make sure Selective Startup is checked



Click on the STARTUP tab



# Is this program an essential process?

- ▶ To determine whether you need the program to start every time you turn on your computer –
  - ▶ Google the file name and select a web site that will describe the file and tell you whether it's harmful, essential or CPU extensive OR
- 

# Is this program an essential process? (continued)

- ▶ Go to [www.processlibrary.com/directory](http://www.processlibrary.com/directory)
  - Enter the file name in the Search box or click on the first letter in the file name

## Browse process directory by name

**A** B C D E F G H I J K L M N O P Q R S T U V W X Y Z OTHER

**1** 2 3 4 5 ... 109 Next

- |                              |                              |                              |                              |
|------------------------------|------------------------------|------------------------------|------------------------------|
| <a href="#">a0000191.dll</a> | <a href="#">a0000208.dll</a> | <a href="#">a0000210.dll</a> | <a href="#">a0001721.dll</a> |
| <a href="#">a0001725.dll</a> | <a href="#">a0001726.dll</a> | <a href="#">a0001727.dll</a> | <a href="#">a0001728.dll</a> |
| <a href="#">a0001729.dll</a> | <a href="#">a0001730.dll</a> | <a href="#">a0001731.dll</a> | <a href="#">a0001732.dll</a> |
| <a href="#">a0001733.dll</a> | <a href="#">a0001734.dll</a> | <a href="#">a0001735.dll</a> | <a href="#">a0001747.dll</a> |
| <a href="#">a0001748.dll</a> | <a href="#">a0001750.dll</a> | <a href="#">a0001752.dll</a> | <a href="#">a0001754.dll</a> |
| <a href="#">a0001756.dll</a> | <a href="#">a0001758.dll</a> | <a href="#">a0001759.dll</a> | <a href="#">a0001777.dll</a> |
| <a href="#">a0001780.dll</a> | <a href="#">a0001781.dll</a> | <a href="#">a0002969.dll</a> | <a href="#">a0002986.dll</a> |
| <a href="#">a0002987.dll</a> | <a href="#">a0002988.dll</a> | <a href="#">a0002989.dll</a> | <a href="#">a0002990.dll</a> |
| <a href="#">a0002991.dll</a> | <a href="#">a0002992.dll</a> | <a href="#">a0002993.dll</a> | <a href="#">a0002994.dll</a> |
| <a href="#">a0002995.dll</a> | <a href="#">a0002996.dll</a> | <a href="#">a0002997.dll</a> | <a href="#">a0002998.dll</a> |
| <a href="#">a0002999.dll</a> | <a href="#">a0003000.dll</a> | <a href="#">a0003001.dll</a> | <a href="#">a0003002.dll</a> |
| <a href="#">a0003003.dll</a> | <a href="#">a0004055.dll</a> | <a href="#">a0004056.dll</a> | <a href="#">a0004057.dll</a> |
| <a href="#">a0004058.dll</a> | <a href="#">a0004059.dll</a> | <a href="#">a0004061.dll</a> | <a href="#">a0004062.dll</a> |
| <a href="#">a0004063.dll</a> | <a href="#">a0004064.dll</a> | <a href="#">a0004065.dll</a> | <a href="#">a0004066.dll</a> |
| <a href="#">a0004067.dll</a> | <a href="#">a0004068.dll</a> | <a href="#">a0004069.dll</a> | <a href="#">a0004070.dll</a> |
| <a href="#">a0004071.dll</a> | <a href="#">a0004073.dll</a> | <a href="#">a0004074.dll</a> | <a href="#">a0004075.dll</a> |
| <a href="#">a0004076.dll</a> | <a href="#">a0004077.dll</a> | <a href="#">a0004090.dll</a> | <a href="#">a0004091.dll</a> |
| <a href="#">a0004093.dll</a> | <a href="#">a0004095.dll</a> | <a href="#">a0004101.dll</a> | <a href="#">a0004106.dll</a> |
| <a href="#">a0004109.dll</a> | <a href="#">a0004110.dll</a> | <a href="#">a0006595.dll</a> | <a href="#">a0006603.dll</a> |
| <a href="#">a0006604.dll</a> | <a href="#">a0006605.dll</a> | <a href="#">a0006606.dll</a> | <a href="#">a0006607.dll</a> |



ProcessLibrary.com

by Uniblue

The Unique and indispensable process listing database since 2004 Now counting 140,000 processes and 55,000 DLLs

### Search

### Navigation

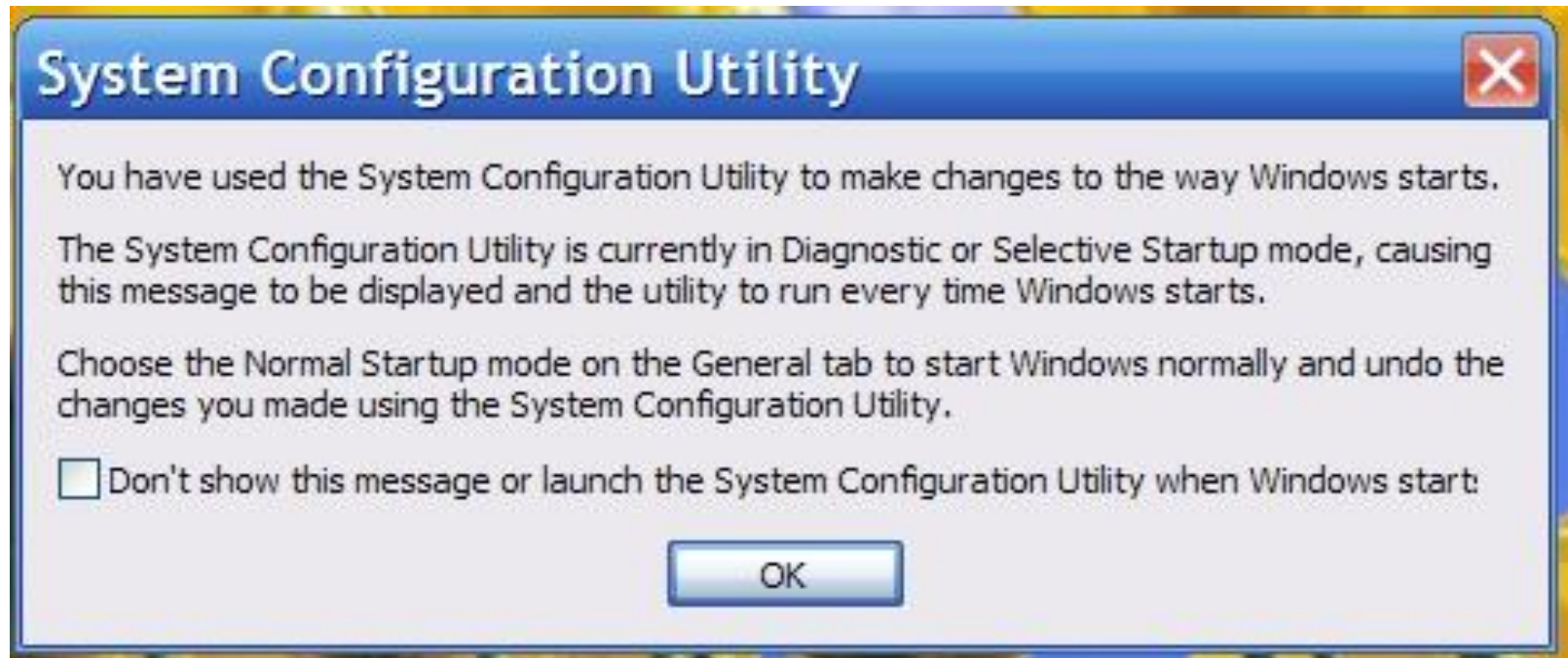
- [Home](#)
- [Process Directory](#)
- [About](#)
- [Privacy Policy](#)
- [Terms of Use](#)

### Toolbox

- [ProcessQuicklink](#)

- ▶ If you decide to remove some files from your Startup folder . . .
  - Remove the check mark in the check box
  - Restart your computer so the change takes affect

- ▶ After restarting, you'll see this window.
- ▶ Click in the box "Don't show . . ."
- ▶ Then click OK



# Should I Remove This File?

- ▶ NEVER . . . NEVER remove a program from Startup if you don't know where it came from or what it does